



Canolfan Grefft Rhuthun
Y Ganolfan i'r Celfyddydau Cymhwysol
Ruthin Craft Centre
The Centre for the Applied Arts

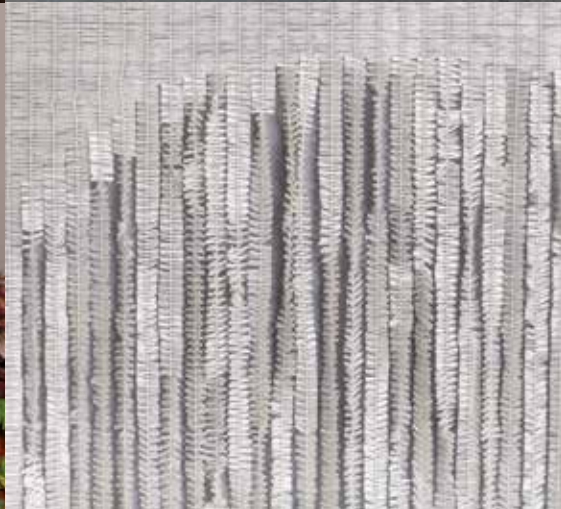
Hydref

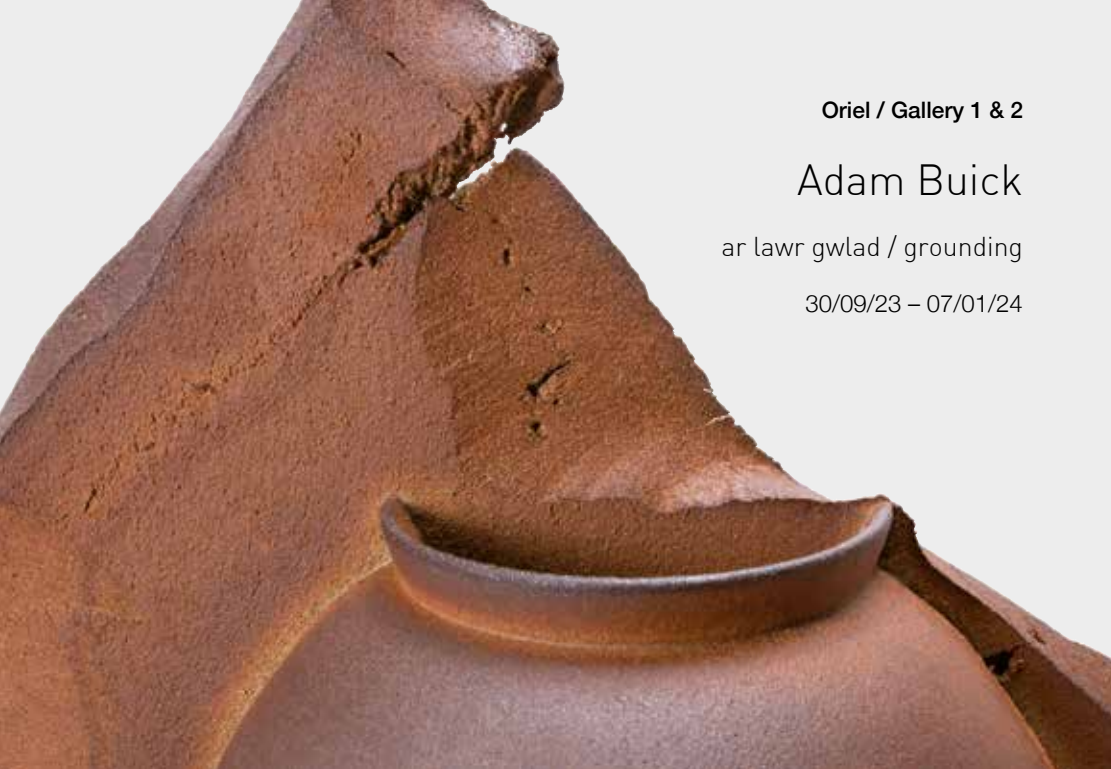
Gweithdai a Digwyddiadau'r
Medi – Rhagfyr 2023



Autumn

Workshops & Events
September – December 2023





Oriel / Gallery 1 & 2

Adam Buick

ar lawr gwlad / grounding

30/09/23 – 07/01/24



Oriel / Gallery 3

Laura Thomas *Wedi'i Wehyddu / Heb ei Wehyddu Woven / Unwoven*

30/09/23 – 07/01/24

02

Mae'n bleser gennym groesawu ein harddangosfeydd newydd a fydd i'w gweld hyd flwyddyn newydd.

Adam Buick: Ar Lawr Gwlad

Arddangosfa unigol newydd o waith cerameg ysbrydoledig gan Adam Buick.

Drwy dynnu ar ei wybodaeth a'i ddiddordeb mewn daeareg, sydd wedi'i hen sefydlu, mae Adam Buick nid yn unig yn datgelu'r adnoddau materol ar gyfer ei lestri ond ysbrydoliaeth eu hestheteg hefyd. Mae'r ffordd y mae'n arsyllu, profi ac yn deall tirwedd wedi'i hadlewyrchu yn addurniad eu harwynebau a'r defnyddiau ynddynt.

Ac yntau wedi'i ysbrydoli gan jariau lleuad Corea mae dehongliadau Buick, sydd wedi'u taflu neu eu torchi, yn chwarae â graddfa a chyflwyniad clai a defnyddiau naturiol lleol. Mae nodwedd anrhagweladwy pob jar yn deillio o'r elfennau naturiol hyn ynghyd â'u trawsnewidiad yn ystod y broses danio. Mae'n crwydro'r glannau i gilfachau diarffordd

We are pleased to welcome our new exhibitions which will be on display until the new year.

Adam Buick: Grounding

A new solo exhibition of inspirational ceramics from Adam Buick.

Drawing upon his longstanding interest and knowledge of geology, Adam Buick unearths not only the physical resources for his jars but inspiration for their aesthetic. The way he observes, experiences and understands landscape is reflected in the embellishment of their surfaces and the materials within.

Inspired by Korean moon jars Buick's thrown and coiled interpretations play with scale and the introduction of locally sourced clays and organic materials. The unpredictable character of each jar comes from these natural elements and their metamorphosis during the firing process. He traverses the coastline to remote coves in search of materials

03

i chwilio am ddefnyddiau i'w cyfuno yn ei botiau ac ymgysylltu â'r manau hynny sy'n rhoi iddo'r synnwyr dwys o berthyn. Ar gyfer yr arddangosfa hon, mae Buick wedi creu cyfres o ddarnau sy'n adlewyrchu'r dylanwadau daearegol a'r tyndra materol parhaus y mae'n awyddus i fanteisio arny'n nhw.

Laura Thomas: Wedi'i Wehyddu / Heb ei Wehyddu

Mae Laura Thomas yn disgrifio Wedi'i Wehyddu / Heb ei Wehyddu fel "ymchwil i egwyddorion gwehyddu a deunydd heb wehyddu; adeiladu v dadadeiladu, sefydlogrwydd v ansefydlogrwydd. Edeifion hirion llac sydd wedi'u dal yn gadarn neu edeifion ystod prin, fydd yr iaith weledol barhaus a hynny ynghyd â'r defnydd ystyriol o liw a llinell." Dywed Helen Rees Leahy "Ochr yn ochr â'i gwaith ar y gwýdd, am sawl blwyddyn, mae Thomas wedi archwilio cynghanedd edafedd drwy ymgrynhoi grwpiau neu batrymau o edeifion rhydd mewn resin a gwyr... Dyma edafedd sydd wedi'u cyflwyno yn eu cyflwr puraf fel trosiad a hefyd fel defnydd".

to fuse into his pots and connect back to the places that give him a deep sense of belonging. For this exhibition, Buick has made a series of pieces that reflect these ongoing geological influences and the material tension that he seeks to exploit.

Laura Thomas: Woven / Unwoven

Laura describes 'Woven / Unwoven' as "an exploration into woven and unwoven principles; construction v deconstruction; stability v instability. Long loose threads held secure through entrapment or sparse warp threads will be the ongoing visual language, along with the considered use of colour and line." As Helen Rees Leahy writes "Alongside her work on the loom, for some years Thomas has explored the poetry of yarn by encapsulating groups or patterns of loose threads in resin and glass... Here is yarn presented in its purest state, as both metaphor and material."



Stiwdio / Studio 2

Ellen Bell

Gwyllo'r Gwylwr /
Gallery Watching



30/09/23 – 26/11/23

Prosiect Cwrt Gofod /
Courtyard Project Space A & B

Susan Milne *Tir / Land*

Gwneuthurwr Printiau mewn ffocws / Printmaker in Focus

30/09/23 – 07/01/24

Ellen Bell: *Gwyllo'r Gwylwr*

Prosiect blwyddyn a gyllidwyd gan Gyngor Celfyddydau Cymru oedd *Gwyllo'r Gwylwr*. Cafodd ei lunio fel modd i ddefnyddio lluniadu i ddal ymateb ymwelwyr wrth iddyn nhw ymwneud â chelf mewn gofod celf. Gweithredais drwy ymweld â Chanolfan Grefft Rhuthun ac Oriol Davies unwaith y mis a chroniclo drwy luniadu mewn amser go iawn – dull greddfrol, adweithredol a chwim o luniadu – fel bod y bobl roeddwn i'n eu lluniadu'n gallu gweld a hefyd bod yn rhan o'r hyn roeddwn i'n ei wneud.

Ysgrifennais ddyddlyfr ar-lein bob mis hefyd gan gofnodi fy mhrofiadau'n lluniadu yn yr orielau a darlunio hwn gyda fy lluniadau. Dechreuodd naratif gweledol ymfurfio ac roedd hwn yn adrodd llanw a thrai'r orielau – eu harddangosfeydd, eu digwyddiadau a demograffig yr ymwelwyr – ynghyd â natur bensaerniaeth ffiniol strwythurau ffisegol yr orielau.

Wrth ddewis gofodau lle'r oedd modd i mi wyllo pobl, sefydlais yr arfer o luniadu'n ddyddiol er mwyn cefnogi'r prosiect ac fel modd i gadw fy lluniadu'n 'gynnes'. Lluniadais mewn llyfrau braslunio, yn yr un modd ag yr oeddwn yn ei wneud yn yr orielau. Rwy'n caru llyfrau braslunio. Rwy'n caru'r modd y gellir eu cludo, eu natur guddiedig a'u hagosatrywydd wrth eu dal-yn-y-llaw. Mae'r arddangosfa hon yn cynnwys rhai o'r llyfrau braslunio hyn.

Ellen Bell: *Gallery Watching*

Gallery Watching has been a year-long project funded by Arts Council Wales (ACW). It was conceived as a means of using drawing to capture visitors' reactions when engaging with art in an art space. Visiting Ruthin Craft Centre and Oriol Davies once a month, I performed real-time reportage drawing – a kind of rapid-fire, instinctual, reactive method of drawing – so that the people that I was drawing could both see and participate in what I was doing.

Each month I also wrote an online journal chronicling my experiences of drawing in the galleries, illustrating this with my drawings. A visual narrative began to take shape that told of the galleries' ebb and flow – their exhibitions, events and visiting demographic – but also the nature of the peripheral architecture of their physical structures.

In support of the project, and as means of keeping my drawing 'warm', I began a practice of drawing every day, choosing spaces in which I could observe people. I drew in sketchbooks, as I did in the galleries. I love sketchbooks. I love their portability, their covertness and held-in-the-hand intimacy. This exhibition includes some of these sketchbooks.

Susan Milne: *Tir* *Gwneuthurwr Printiau mewn ffocws*

Mae Susan Milne wedi byw yn ardal y Mynydd Du ers dros ddeugain mlynedd ac wedi gweithio yn y tir ac o'r tir o'i chwmpas.

Mae'r lluniau siarcol yn cyfleu presenoldeb aruthrol y mynyddoedd yn ogystal â'r golau sy'n tywynnu drwy'r isdyfiant o gwmpas yr afon Ennig ger ei chartref. Gwnaed y lluniadau inc rhwydd yn ystod y cyfnod clo pan oedd hi'n mynd am dro bob dydd. Ac yna cawsant eu gosod yn ffenestr flaen ei thŷ a hynny er mwyn i'r sawl a oedd yn mynd heibio eu gweld wrth iddynt hwythau fynd am dro yn y mynyddoedd. Gyda llawer o'i monobrintiau mae hi wedi edrych ar y ddaear dan ei thraed yn hytrach nag ar ehangder ei hamgylchfyd ac mae hi wedi ymgorffori pridd go iawn o'r mynyddoedd yn ei phrintiau.

Susan Milne: *Land* *Printmaker in Focus*

For over forty years, Susan Milne has lived in the Black Mountains and has worked in and from the land which surrounds her.

The charcoal drawings convey the commanding presence of the mountains as well as light shining through the undergrowth around the River Ennig near her home, while the fluid ink drawings were made on her daily lockdown walks and exhibited in her front window to be viewed by those passing by on their own mountain walks. With many of the monoprints, she has looked at the earth beneath her feet rather than the vastness of her surroundings and has incorporated the actual soil of the mountains into the prints.

**Pob Arddangosfa Golygfa Breifat
Sadwrn 30 Medi 2 – 4pm
Croeso i bawb**

.....

11.30am – 12.30pm. Bydd Helen Rees Leahy yn sgwrsio â Laura Thomas
4pm – 5pm. Bydd Peter Bodenham yn sgwrsio ag Adam Buick

**All Exhibitions Private View
Saturday 30 September 2 – 4pm
All are welcome**

.....

11.30am – 12.30pm. Helen Rees Leahy in conversation with Laura Thomas
4pm – 5pm. Peter Bodenham in conversation with Adam Buick

Mae'n bleser gan Ganolfan Grefft Rhuthun gyhoeddi ystod o weithgareddau a digwyddiadau i'ch ysbrydoli a'ch difyrru drwy'r Hydref hwn – Ar gyfer POB oed!

Ruthin Craft centre is pleased to announce a range of activities and events to inspire and entertain you throughout this Autumn – For ALL ages!

Dwylo Bach – ar gyfer oedran 0–5

AM DDIM. Gweithdai Galw-heibio Dim angen archebu, dim ond galw draw!

Dewch i ymuno â ni mewn gweithdai galw-heibio synhwyrdd llawn hwyl wrth i ni greu amgylcheddau a gweithgareddau chwareus sydd wedi'u hysbrydoli gan ein harddangosfeydd, i chi a'r bychan eu darganfod a'u mwynhau!

Sadwrn 7 Hydref
10am – 11.30am & 1pm – 2.30pm

Mercher 8 Tachwedd
1pm – 2.30pm

Mercher 13 Rhagfyr
1pm – 2.30pm

Gwnaed y prosiect hwn yn bosibl drwy Gronfa Fferm Wynt Fforest Clocaenog a Menter a Busnes Cymru.

Dwylo Bach – For ages 0–5

FREE. Drop-in Workshops No need to book, just pop on in!

Come and join us for a fun-filled sensory drop-in workshops as we create environments and activities, inspired by our exhibitions, which are playful for you and your little one to discover and enjoy!

Saturday 7 October
10am – 11.30am & 1pm – 2.30pm

Wednesday 8 November
1pm – 2.30pm

Wednesday 13 December
1pm – 2.30pm

This project has been made possible by the Clocaenog Forest Wind Farms Fund and A&B Cymru.



Arts & Business Cymru

Dosbarthiadau meist

Yr Hydref hwn mae gennym ystod o ddsbarthiadau meist wedi'u hwyluso gan wneuthurwyr profiadol ac enwog – bydd y gweithdai'n cynnwys defnyddiau, te a coffi. I bob oed 18–60+

Marian Hâf: Gweithdy Printio gyda Defnydd Pecynnu

Sul 8 Hydref
10.30am – 4.30pm £55

Ymunwch â'r artist a'r gwneuthurwr printiau Marian Hâf yn y gweithdy undydd hwn lle byddwch yn trawsnewid defnydd pecynnu bob dydd yn brintiau chwareus wrth ddefnyddio hud a lledrith creu printiau.

Gweithdy Cerameg Claudette Forbes

Sul 15 Hydref
10.30am – 4.30pm £85

Addurno Arwynebau Cerameg â glas. Yn ystod y gweithdy hwn caiff y cyfranogwyr eu cyflwyno i amrywiaeth o dechnegau addurno arwyneb: decalau, monobrintio a chreu marciau.

Gweithdy Gemwaith Karen Williams

Sadwrn 11 Tachwedd
10.30am – 4.30pm £85

Dosbarth meist yng nghwmni'r artist gemwaith Karen Williams yn archwilio arwyneb er mwyn creu tllws crog a chlustdylsau arian gwadedog.

Masterclasses

This Autumn we have a range of masterclasses facilitated by experienced and well-known makers. Workshops include all materials, tea and coffee. For ages 18–60+

Marian Hâf: Printing with Packaging workshop

Sunday 8 October
10.30am – 4.30pm £55

Join artist and printmaker Marian Hâf in this one-day workshop where you will be transforming household packaging into playful prints using the magic of printmaking.

Claudette Forbes Ceramics workshop

Sunday 15 October
10.30am – 4.30pm £85

Ceramics Surface decoration in blue. During this workshop participant will be shown a variety of surface decoration techniques: Decals, Monoprinting and Mark Making.

Karen Williams Jewellery workshop

Saturday 11 November
10.30am – 4.30pm £85

A masterclass with jeweller Karen Williams exploring surface to produce a textured silver pendant and earrings.



Marian Hâf



Claudette Forbes



Karen Williams

Dosbarthiadau meist

Braslunio Trefol a Dogfennol yng nghwmni [Emma-Jayne Holmes](#) 'Y cyfan ynghylch braslunio'

Sadwrn 18 Tachwedd
10.30am – 4pm £55

Cyfranogwch yn y gweithdy trochi hwn dan arweiniad yr artist dawnus Emma-Jayne Holmes wrth iddi eich arwain drwy gelfyddyd fraslunio.

[Nigel Morris](#): Cyflwyniad i Brintio Leino

Sul 19 Tachwedd
10.30am – 4.30pm £85

Mae'r diwrnod rhagarweiniol hwn yn cynnig cyfle i'r sawl y mae creu printiau yn newydd iddyn nhw a'r rheiny sy'n awyddus i ddysgu mwy ynglŷn â'r prosesau sydd ynghlwm â phrintio leino.

[Laura Thomas](#) Gweithdy Gwehyddu 'Torri Rheolau'

Sadwrn 25 & Sul 26 Tachwedd
10.30am – 4pm £170

Ymunwch â'r artist Laura Thomas yn y gweithdy deuddydd arloesol hwn. Dyma weithdy sydd wedi'i lunio er mwyn annog y cyfranogwyr i dorri rheolau gwehyddu a symud o'u manau cysurus.

Masterclasses

Urban and documentary sketching with [Emma-Jayne Holmes](#) 'All about sketching'

Saturday 18 November
10.30am – 4pm £55

Take part in this immersive workshop lead by talented artist Emma-Jayne Holmes as she guides you through the art of sketching.

[Nigel Morris](#): An Introduction to Lino Print

Sunday 19 November
10.30am – 4.30pm £85

This introductory day provides an opportunity for those who are new to printmaking and those who want to learn more about the processes involved in lino printing.

[Laura Thomas](#) 2 day 'Rule Breaking' Weaving workshop

Saturday 25 & Sunday 26 November
10.30am – 4pm £170

Join artist Laura Thomas on this innovative two-day weaving workshop. A workshop that is designed to encourage participants to break the rules of weaving and push themselves outside of their comfort zones.

Dosbarthiadau meist

Simeon Jones: Crëwch llyfr nodiadau poced

Dyddiad IG
10.30am – 4.30pm £70

Bydd Simeon yn dysgu'r rheiny sy'n cymryd rhan sut i greu llyfr nodiadau poced syml caiff ei gynnwys mewn cês. Bydd pob cyfranogwr yn mynd adref gyda llyfr gorrffenedig.

Gweithdy 'Sgwarnog' [Juliette Hamilton](#)

Sadwrn 9 Rhagfyr
10.30am – 4.30pm £85

Ymunwch â'r cerflunydd helyg yn y gweithdy undydd creu 'sgwarnog hwn. Yn ystod y gweithdy bydd Juliette yn eich tywys drwy'r dull a'r broses o droi helyg yn 'sgwarnog 3D – perffaith ar gyfer addurniadau'r gaeaf.

Gweithdy Torch ac Addurniadau gyda [Kate Jordan](#)

Sul 10 Rhagfyr
10.30am – 4pm £55

Mwynhewch yr ŵyl gyda'r dylunydd blodau teledu a digwyddiadau Kate Jordan yn ein gweithdy Nadolig llawn blodau. Yn cynnwys defnyddiau, te, coffi a mins peis

Masterclasses

Simeon Jones: Make a pocket notebook

Date TBC
10.30am – 4.30pm £70

Simeon will teach participants how to make a simple, cased-in pocket notebook. All participants will go home with a completed book.

[Juliette Hamilton](#) Hare Workshop

Saturday 9 December
10.30am – 4.30pm £85

Join willow sculptor Juliette Hamilton in this one-day hare making workshop. During this workshop Juliette will take you through the method and process of turning willow into a 3D hare, perfect for winter decorations.

[Kate Jordan](#) Wreath and Decorations Workshop

Sunday 10 December
10.30am – 4pm £55

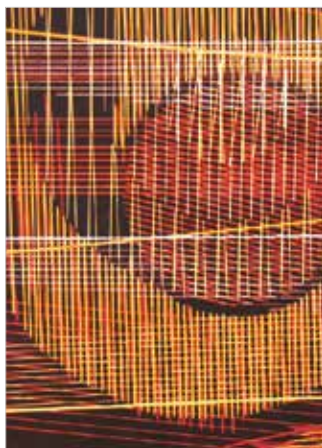
Get festive with TV and event floral designer Kate Jordan in our fully floral Christmas workshop. Includes materials, tea, coffee and mince pies.

Cliciwch ar y ddolen ar bob gweithdy i archebu. Mae manylion pellach ar gyfer pob gweithdy ar gael ar ein tudalen [Eventbrite](#).

Click the link on each workshop to book. Please refer to our [Eventbrite](#) page for further details on each workshop.



Emma-Jayne Holmes



Nigel Morris



Laura Thomas



Simeon Jones



Juliette Hamilton



Kate Jordan



WARNING NOTES

GAN MARK ANDERSON
WEDI'I GREU
AR Y CYD
A LIAM WALSH

BY MARK ANDERSON
CREATED IN
COLLABORATION
WITH LIAM WALSH

"Gwaith hudolus, hyfyd a bygythiol wedi wehyddu o gerfluniau sain a nodau rhythmig hardd"

"A pulsing, gorgeous and threatening world woven out of sound sculptures and beautiful, rhythmic notes"



mark-anderson.uk #warningnotes

Oxford
Contemporary
Music

Cyngor Celfyddydau Cymru
Arts Council of Wales

ARIENIR GAN
Y LOTERI
LOTTERY FUNDED



Digwyddiad

Drwy gydol hanner tymor yr Hydref, mae'n bleser gennym groesawu'r gosodwaith sain trochol *Warning Notes*: crëwyd gan Mark Anderson a Liam Walsh. Cynhelir dau ddiwrnod arddangos ac un gweithdy.

WARNING NOTES

Gwener 3 a'r Sadwrn 4 Tachwedd

Wrth i ddydd droi'n nos, trochwch eich hunan yn yr awyr agored mewn byd o sain gyfareddol a pherfformiad byw cyfnewidiol. Drwy ddefnyddio 'offerynnau' sy'n weledol trawiadol – gongiau, clychau, chwibanau a ffrwydiadau – mae *Warning Notes* yn creu seinwedd gyfoethog a grymus sy'n cynnig llais i'r braw cymdeithasol ac ecolegol presennol sy'n lledu ar draws ein byd.

Mae *Warning Notes*, sioe fyrfyfyr newydd yr artist rhyngwladol Mark Anderson, yn ymateb i'r gynulleidfa ac i'r amgylchedd ac yn chwareus a hudolus wrth ein gwahodd i wrando ar y presennol a myfrio ar straeon personol a byd eang – ac ar ein dyfodol gyda'n gilydd.

Gwelwch ein gwefan am ragor o wybodaeth ac am gyfarwyddyd ar sut i archebu.

Warning Notes: [Gweithdy](#)

Sadwrn 4 Tachwedd

10.30am – 2.30pm

AM DDIM. Ar gyfer oedranau 13+

Rhaid i'r sawl sydd o dan 16 oed fod dan ofal oedolyn.

Mae'n bleser gennym eich croesawu i gymryd rhan yn y gweithdy sain untro hwn a gynhelir yn rhan o osodwaith teithiol *Warning Notes*.

Byddwch yn ennill sgiliau a phrofiad o ran gwrando, recordio maes a dylunio sain, yn ogystal â chyfle i fyfrio ar faterion lleol a byd-eang.

Event

Throughout the Autumn half term, we are pleased to welcome the travelling immersive sound installation *Warning Notes*: Created by Mark Anderson & Liam Walsh. There will be a total of two show days and one workshop.

WARNING NOTES

Friday 3 & Saturday 4 November

As day turns to night, immerse yourself in a captivating sound world and ever changing outdoor live performance. Using an ensemble of visually striking mechanical 'instruments' – gongs, bells, whistles and explosive events – *Warning Notes* creates a rich and powerful soundscape that gives voice to the current social and ecological alarm that ripples across our world.

A new show by international artist Mark Anderson that is improvised and responsive to audience and environment, *Warning Notes* is playful and hypnotic, inviting us to listen to the present and contemplate both personal and global stories – and our future together.

Please refer to our website for more information and how to book.

Warning Notes: [Workshop](#)

Saturday 4 November

10.30am – 2.30pm

FREE. For ages 13+

Under 16's must be accompanied by an adult.

We are pleased to welcome you to take part in this one-off sound workshop, taking place as part of the travelling installation *Warning Notes*.

Gain skills and experience in listening, field recording and sound design, as well as an opportunity to reflect on local and global issues.

Archebu

Am fanylion pellach, cysylltwch â

**Seren Gwanwyn
Swyddog Addysg**

seren.gwanwyn@denbighshireleisure.co.uk
neu ffoniwch yr oriel ar 01824 704774

Archebwch yr holl restrau trwy [Eventbrite](#)
– Sganiwch y Cod QR neu Cliciwch ar y
ddolen ar bob gweithdy i archebu.

Booking

For more information please contact

**Seren Gwanwyn
Education Officer**

seren.gwanwyn@denbighshireleisure.co.uk
or call the gallery on 01824 704774

Book all listings via [Eventbrite](#) –
Please scan the QR Code or click the
link on each workshop to book.



Adam Buick

**Canolfan Grefft Rhuthun
Y Ganolfan i'r Celfyddydau Cymhwysol**
Heol y Parc, Rhuthun, Sir Ddinbych LL15 1BB
Ffon: +44 (0)1824 704774

Mynediad AM DDIM. Parcio ar-safle AM DDIM
Ar agor Mawrth – Sul, 10am – 5.30pm
www.canolfangrefftrhuthun.org.uk

**Ruthin Craft Centre
The Centre for the Applied Arts**
Park Road, Ruthin, Denbighshire LL15 1BB
Tel: +44 (0)1824 704774

FREE admission. FREE On-site parking
Open Tuesday – Sunday, 10am – 5.30pm
www.ruthincraftcentre.org.uk